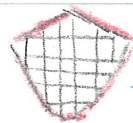


BURNING  
MAN 2022



WAKING  
DREAMS

# BRAINCAR

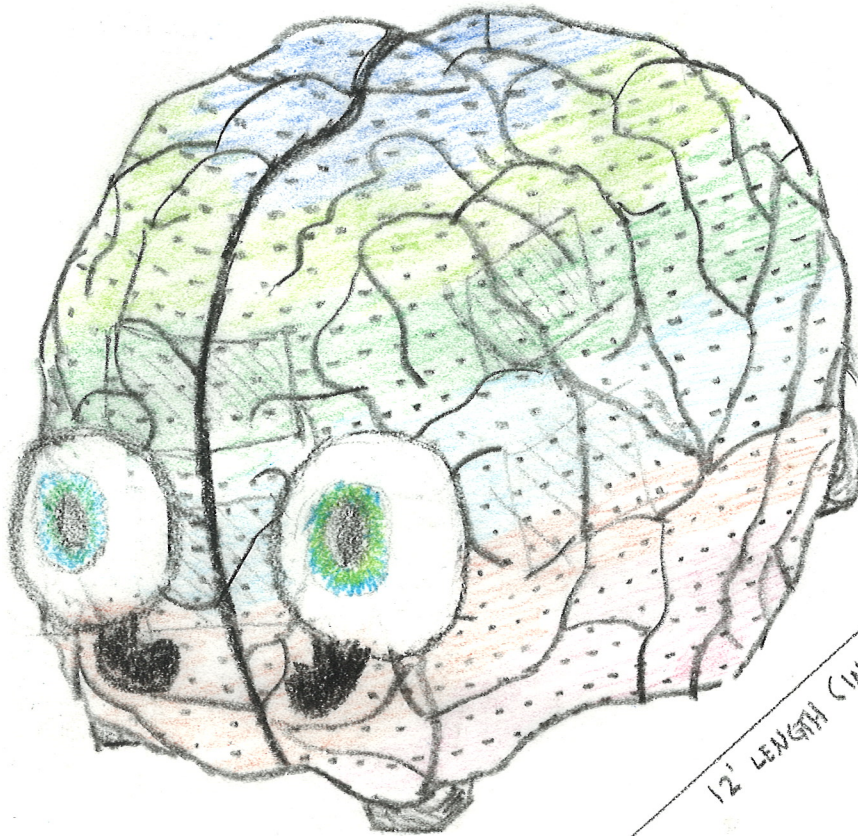
Looking for dreams

Translucent panels for driver

Front, back, and sides

Dreamscape

Controlled LEDs showing dreams



12' LENGTH (INCL. EYEBALLS)

8' WIDTH

Golf cart chassis

Electric

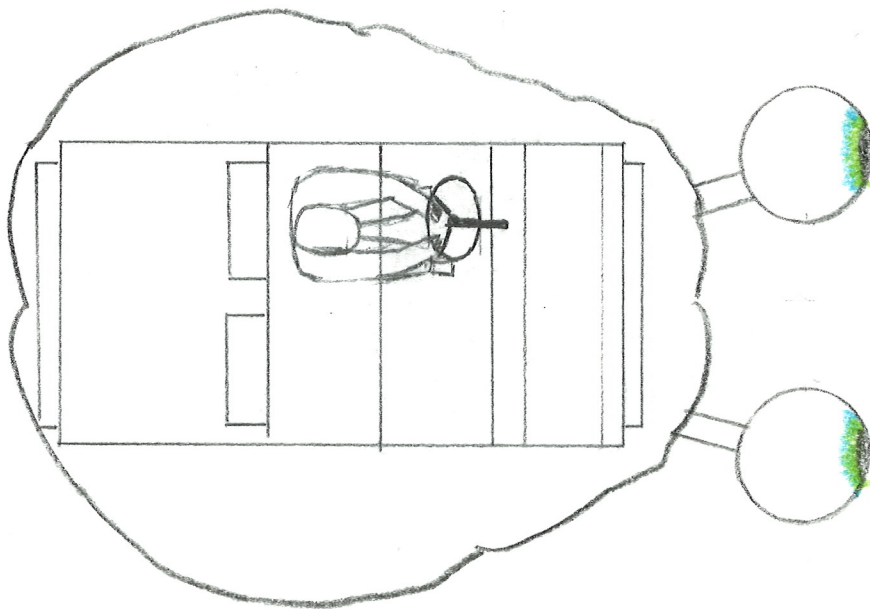
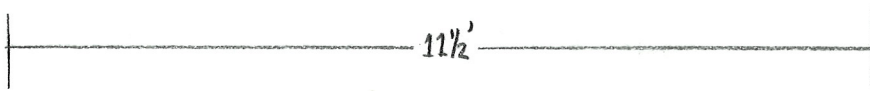
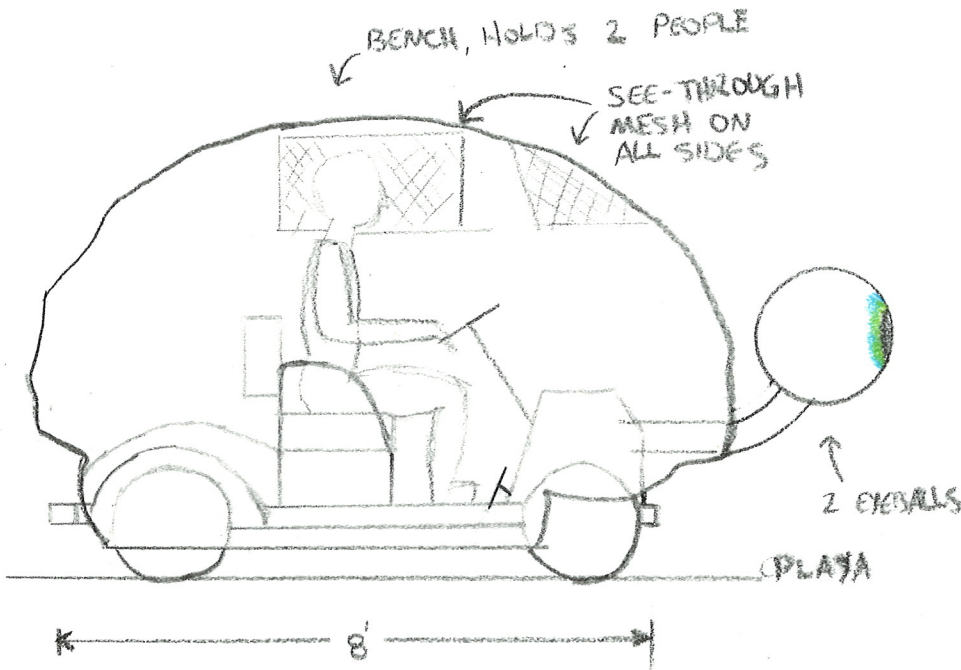
Two seats up front, rear entry

Max speed 9mph

Eyeballs looking for dreams

Projection on inside of globes

# SECTIONAL VIEWS



## MATERIALS:

- EV GOLF CART
- BOX STEEL FOR PRIMARY SUPPORT
- PLYWOOD FOR SECONDARY SUPPORT
- WIRE MESH FOR SKIN SUPPORT
- FIBERGLASS SKIN (RESIN + MESH)

## EYE BALLS:

- 2-PIECE POLY SHELLS, TRANSLUCENT
- SMALL PROJECTOR
- BOX STEEL SUPPORTS
- BRIGHTLY LIT

## LIGHTING:

- 1" SPACED LEDS (WS2811 PIXELS)
- ARDUINO CONTROLLERS

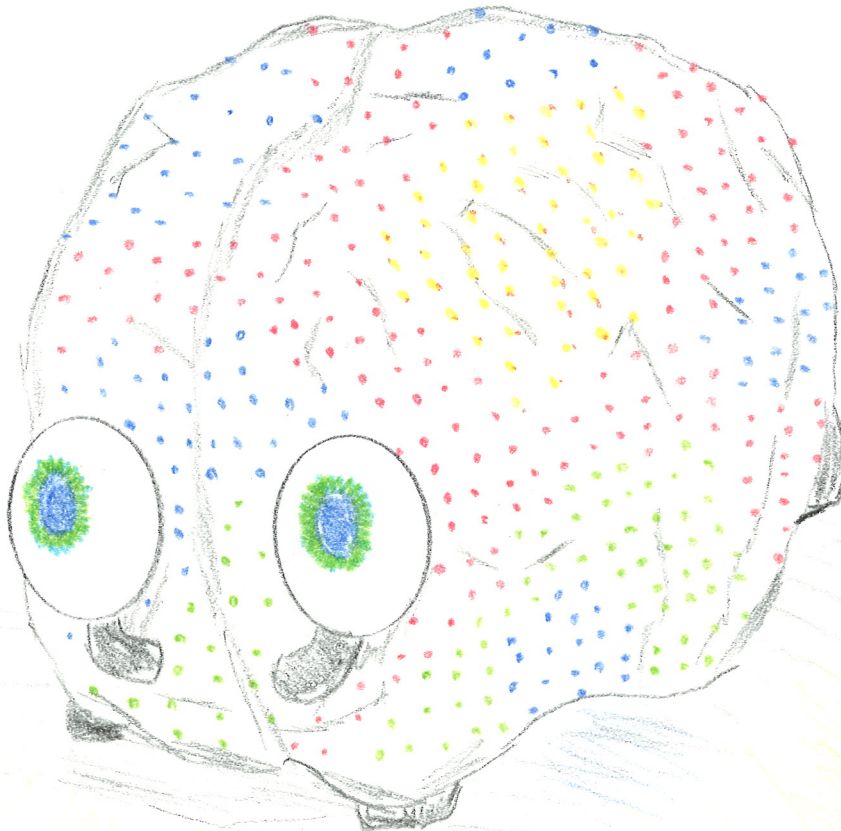
## LIGHTING EFFECTS

### PIXELS:

- WS2811 LIGHTS, 1" SPACING
- COVERS ENTIRE SHELL
- DISPLAYS ABSTRACT PATTERNS

### EYEBALLS:

- 16" ACRYLIC GLOBES
- INTERNAL PROJECTORS
- ANIMATED IRIS & PUPILS



NOTE: EYEBALL  
GLOBES DO NOT  
MOVE BUT IMAGES  
OF IRIS & PUPILS  
DO MOVE.

# LIGHTING EFFECTS

## HIGH ILLUMINATION:

- WITHIN ~4' OF VEHICLE

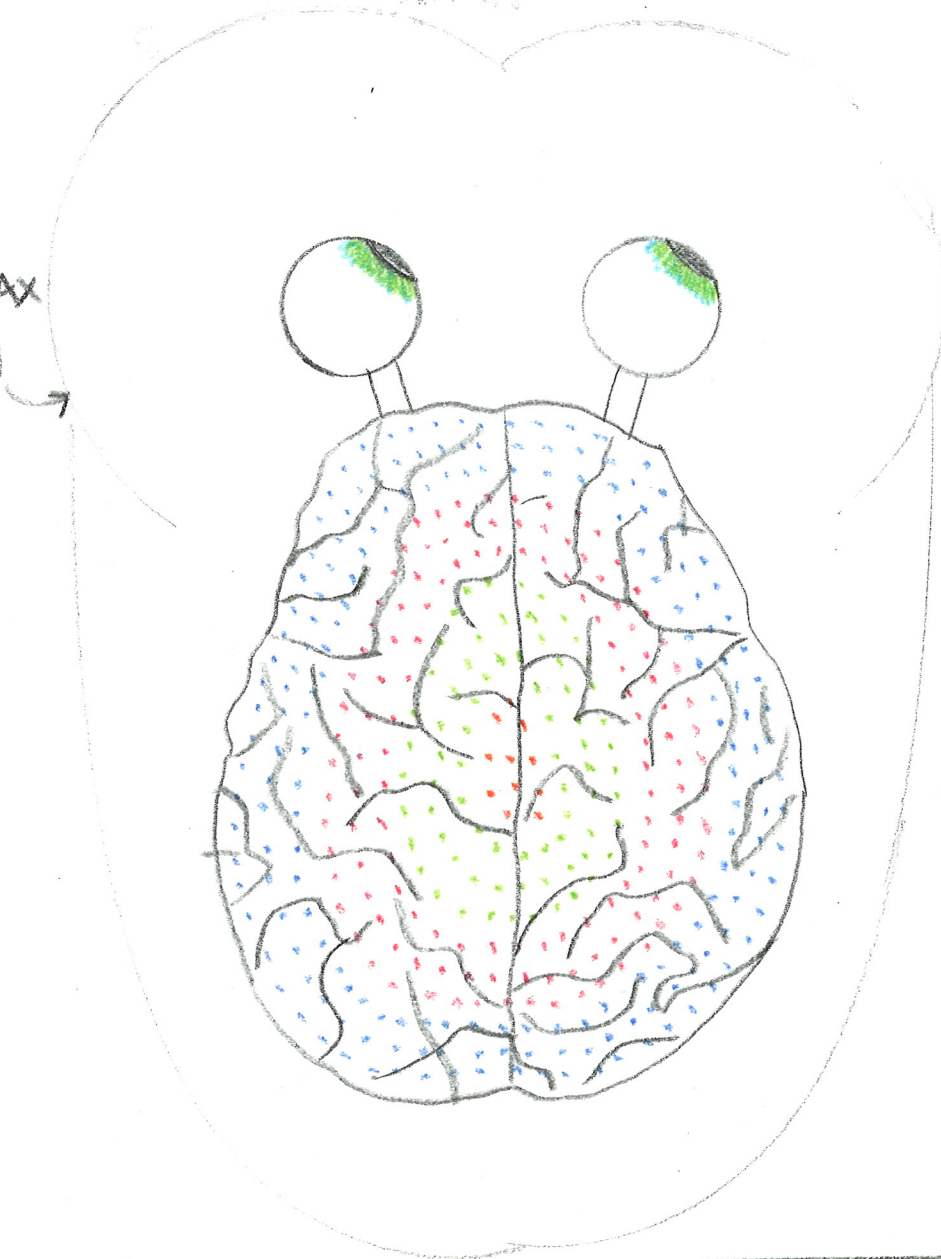
## COUNTS:

- 2 MINI PROJECTORS
- ~5000 LED PIXELS

## DISTANCE:

- CLEARLY VISIBLE: ~100 yds
- AS VEHICLE: ~1/4 mi

APPROX. MAX  
GROUND  
ILLUMINATION



BRAW CAR PAGE 4

BURMAN, MAN 2022